

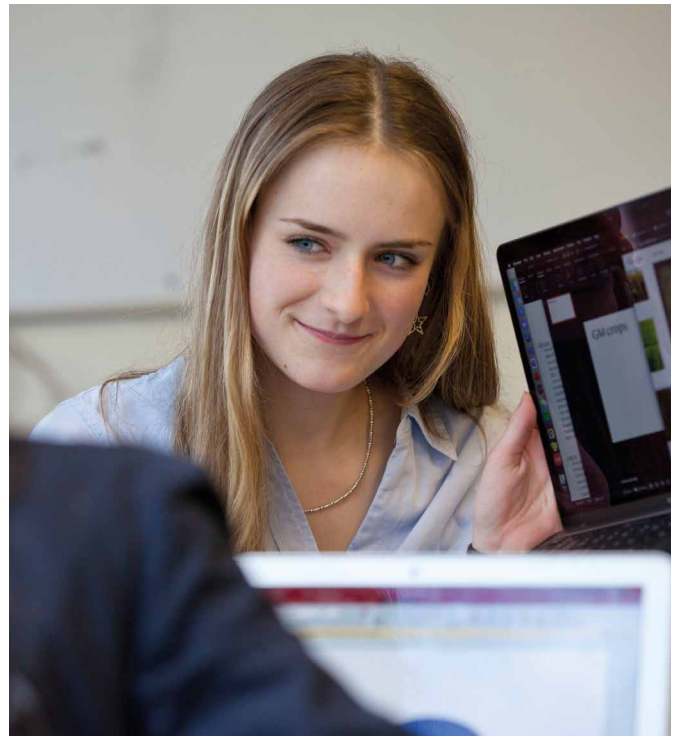
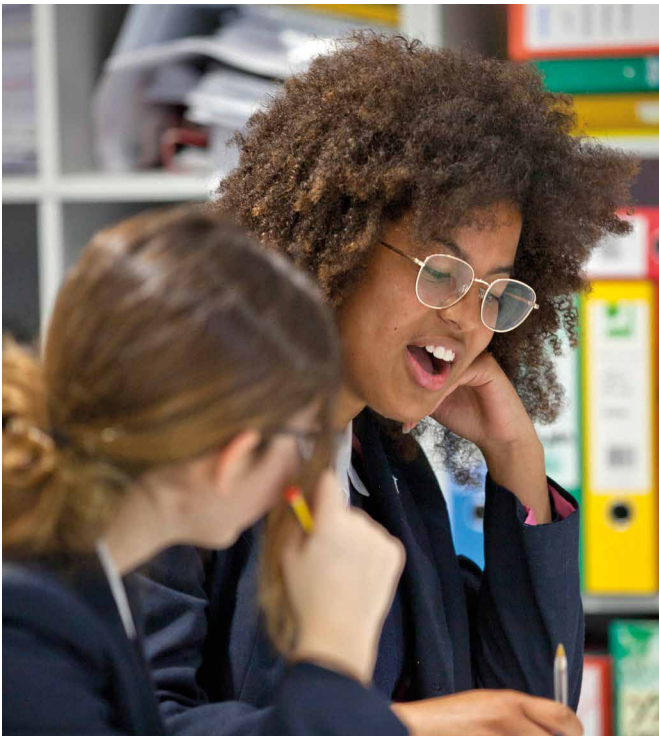


EXAMINATION RESULTS AND DESTINATIONS OF LEAVERS

2022



WOLDINGHAM
SCHOOL



Woldingham students achieved excellent results at both A Level and GCSE in 2022 as we returned to exams after two years of COVID disruption.

Our Upper Sixth leavers did fantastically well in their first set of public exams, having not sat GCSEs in 2020, with 55% graded A or A*, 23% graded A*. Woldingham students did particularly well in French and Spanish where all students received an A*.

This outstanding set of results ensured that most Upper Sixth leavers secured a place at their first-choice university. Two students are starting at the University of Cambridge this year and one is going to the University of Oxford. Once again, the University of Exeter was the most popular choice for Woldingham students, with seven students starting there this autumn. Other popular UK destinations included Durham, Bristol, UCL, Edinburgh and Bath. As always, the range of university subjects is diverse from neuroscience to HSPS (human, social and political sciences) and from fashion management to French and Spanish.

An increased number of students applied to institutions overseas, securing places at prestigious universities, including Parsons School of Design in New York, NYU, Pomona in California, the University

of Toronto and Flinders University, Australia. One student chose to follow the degree apprenticeship route with Thales and the University of Warwick.

At GCSE, 33% of all grades were at 9, 57% were 9-8, and 78% were 9-7, the equivalent of A* to A. Six students received at least 10 grade 9s. The grades achieved in all three of the sciences - chemistry, biology, physics - as well as in English language and French were particularly impressive.

We were also delighted with our excellent EPQ results - 11 A*s, 11 As and 7 Bs. Diverse topics included elephant consciousness, a film script about amnesia, and an evaluation of cancer models.

I am so very proud of our students and their achievements, made possible through their hard work and diligence, as well as by the excellent teaching and support from colleagues across Woldingham.

Dr James Whitehead, Head
MA (Oxon), MPhil, PhD, FRSA

GCSE RESULTS 2022

Subject	9	8	7	6	5	4	Total	%9	%9-8	%9-7	%9-6	%9-5	%9-4
Art	9	10	7	6	5	1	38	24	50	68	84	97	100
Biology	26	10	6	1	2	1	46	57	78	91	93	98	100
Chemistry	23	9	8	5		1	46	50	70	87	98	98	100
Chinese			1				1	0	0	100	100	100	100
Classical Greek	1						1	100	100	100	100	100	100
Computer Science	3	3	4	2	1	2	15	20	40	67	80	87	100
Design and Technology	5	8	4	4	4	1	26	19	50	65	81	96	100
Drama	7	10	5	6	2		30	23	57	73	93	100	100
English as a Second Language			1				2	0	0	50	50	50	50
English Language	40	23	22	4			89	45	71	96	100	100	100
English Literature	26	15	21	17	8	2	89	29	46	70	89	98	100
French	14	8	2	3			27	52	81	89	100	100	100
Geography	10	10	8	2	1		31	32	65	90	97	100	100
German	2	1	2				5	40	60	100	100	100	100
History	7	11	10	4	3		35	20	51	80	91	100	100
Latin	2						2	100	100	100	100	100	100
Mathematics	26	14	17	11	14	9	91	29	44	63	75	90	100
Mathematics - Further	15	8	3	2	1		29	52	79	90	97	100	100
Music	4		1	1	1		7	57	57	71	86	100	100
PE	8	3		3			14	57	79	79	100	100	100
Physics	24	12	6	3		1	46	52	78	91	98	98	100
Science (Double & Single Awards)	8	27	28	17	7	1	89	9	39	71	90	98	99
Spanish	4	11	6	2	5		28	14	54	75	82	100	100
Theology	27	22	19	12	6	3	90	30	54	76	89	96	99
Totals	291	215	181	105	60	22	877	33	58	78	90	97	100

Results correct after all re-marks, October 2022. Percentages rounded to nearest whole number.

A LEVEL RESULTS 2022

Subject	A*	A	B	C	D	E	Total	%A*	%A*-A	%A*-B	%A*-C	%Pass
Art	4	2	2	4			12	33	50	67	100	100
Biology	3	6	2	4			15	20	60	73	100	100
Business		2	3	2	1		8	0	25	63	88	100
Chemistry	1	5	10	5	3	1	25	4	24	64	84	100
Classical Civilisation		1	1				2	0	50	100	100	100
Computer Science		2	1	2		1	6	0	33	50	83	100
Design and Technology	5			1			6	83	83	83	100	100
Economics	2	6	6	2			16	13	50	88	100	100
English Literature	5	7	4	1			17	29	71	94	100	100
French	2						2	100	100	100	100	100
Geography	6	4	1				11	55	91	100	100	100
German		1					1	0	100	100	100	100
History	2	5	1	1			9	22	78	89	100	100
History of Art		2	3				5	0	40	100	100	100
Latin			1				1	0	0	100	100	100
Maths	7	10	8	2	2		30	23	57	83	90	97
Maths - Further	1	1	6		1	1	10	10	20	80	80	100
Media Studies	1	6	1			1	9	11	78	89	89	100
Music	1	1	1				3	33	67	100	100	100
Physics		2	2	2	1		7	0	29	57	86	100
Politics	2	2	3				7	29	57	100	100	100
Portuguese		1					1	0	100	100	100	100
Psychology	2	4	5	1			12	17	50	92	100	100
Religious Studies	8	3	3				14	57	79	100	100	100
Spanish	5						5	100	100	100	100	100
Textiles	1	2	2	1			6	17	50	83	100	100
Theatre Studies		1	1	1			3	0	33	67	100	100
Total	58	76	67	29	8	4	243	24	55	83	95	100

DESTINATION OF LEAVERS 2022

Bath	3	Glasgow	1	Sheffield	2
Education with Psychology	1	Common Law	1	Business Management and Economics	1
Management	1			Philosophy	1
Politics and International Relations	1	Lancaster	1		
		Economics	1	St Andrews	1
Birmingham	2			English	1
Music	1	Leicester	1		
Politics and International Relations	1	Biological Sciences (with foundation year)	1	St Mary's	1
				Business Management and Entrepreneurship	1
Brighton	1	London Metropolitan	1		
Biomedical Science	1	Forensic Science	1	Staffordshire	1
				Computer Science	1
Bristol	3	Manchester	1		
Business and Management	1	Management (International Business Economics)	1	Surrey	1
International Business Management with study abroad	1			Applied and Contemporary Theatre	1
Neuroscience	1				
Camberwell College of Arts	3	Newcastle	1	Sussex	1
Art Foundation	2	Nutrition with Food Marketing	1	Geography	1
Product and Industrial Design	1				
		Nottingham	1	Toronto	1
Cambridge	2	Psychology and Cognitive Neuroscience	1	Computer Science	1
English	1				
Human, Social and Political Sciences	1	Nottingham Trent	1	UCL	3
		Computer Science (AI)	1	Biomedical Sciences	1
Cardiff	2			Economics with a placement year	1
Archaeology and Ancient History	1	NYU	1	History of Art	1
English Literature	1	TBC	1		
				University of the Arts London	1
Durham	3	Oxford	1	Strategic Fashion Management	1
Accounting and Management	1	French and Spanish	1		
Anthropology and Sociology	1			Warwick	2
Philosophy, Politics and Economics	1	Oxford Brookes	1	Chemistry with an industrial placement	1
		Business and Finance	1	Degree apprenticeship	1
Edinburgh	2				
Architecture	1	Parsons School of Design, New York	1	Westminster	1
Chemistry	1	TBC	1	Digital Media	1
Exeter	7	Pomona College, California	1	York	1
Business with industrial experience	1	Liberal Arts	1	Economics	1
English and Modern Languages	1				
Marine Biology	1	Queen Mary University of London	1		
Natural Sciences	1	Mathematics with Finance & Accounting with a year abroad	1		
Sociology	2				
Theology and Religion	1	Reading	1		
		Mathematics with Finance and Investment Banking	1		
Flinders, Australia	1				
Medicine	1				

83%

of A Level results A*-B



Woldingham School, Marden Park, Woldingham, Surrey, CR3 7YA
(for satellite navigation please use postcode CR3 7LR)

T: 01883 349431 E: info@woldinghamschool.co.uk
woldinghamschool.co.uk

This document is a carbon balanced publication, where the carbon impact of the production process has been balanced by the World Land Trust. It has been printed using vegan inks and paper stock from a sustainable source.