

BRIEF FOR THE POSITION OF

# TEACHER OF CLASSICS

WOLDINGHAM SCHOOL



February 2023



# The school

Set in 700 acres of beautiful Surrey countryside, Woldingham is one of the UK's leading day and boarding schools for girls aged 11-18. Woldingham is an inspiring place for students to become confident, compassionate and courageous young women. It's where students learn to 'write your own story' through excellent teaching, boundless opportunities and first rate pastoral care.

As one of the UK's oldest girls' schools, Woldingham is proud to be a pioneer of women's education. Our single-sex environment is supportive and stimulating.

Students achieve outstanding GCSE and A Level results opening doors to exciting careers.

Woldingham is increasingly popular and we are almost at maximum capacity, with a record number of applicants for September 2023.

Students achieve outstanding GCSE and A Level results opening doors to exciting careers. Woldingham is in the top 1% of schools for added value.

Most students leave Woldingham to take university places at prestigious institutions in the UK and overseas. Around 75% go to courses at Oxbridge or Russell Group universities. In the past five years we have had 26 Oxbridge offers. In recent years some of the most popular UK universities for students have included Bristol, Durham, Edinburgh, Exeter, Manchester and

UCL. Woldingham students have also taken up places at a range of universities overseas including Princeton, NYU and Cornell in the USA.

Academic excellence in all subject areas goes hand in hand with learning beyond the classroom. Our exceptional extra-curricular programme of sport, clubs, performing arts and outreach into our local community enables students to develop a wonderful range of skills, expertise and interests, alongside high-level academic achievement.

Around 50% of students board – full, weekly or flexi. Around 40% of our students live locally, 35% come from London and 25% from overseas. Our global community is very important. More than 40 nationalities make up the Woldingham staff and student community.

Woldingham is increasingly popular, with a record number of applicants for September 2023.



The Board of Governors agreed a new strategic development plan for 2019-2024, with a refreshed vision and mission underpinned by the school's Sacred Heart values of faith, community, intellectual values, social awareness and personal growth. The plan has been extremely well received and the school has made a positive start to achieve the ambitious vision.





## HISTORY

Founded by Saint Madeleine Sophie Barat in 1842, Woldingham is one of the oldest girls' schools in the UK. Initially based in Acton, the school later moved to Roehampton and in 1946 moved to our current home at Marden Park. Initially a full boarding school, Woldingham now has a well-balanced mix of boarders and day students.

As the first Sacred Heart school in England, Woldingham was initially called the Convent of the Sacred Heart. It became Woldingham School in 1985 when it moved to lay leadership.

Woldingham celebrates our 180th anniversary in the 2022-23 school year.

## ETHOS

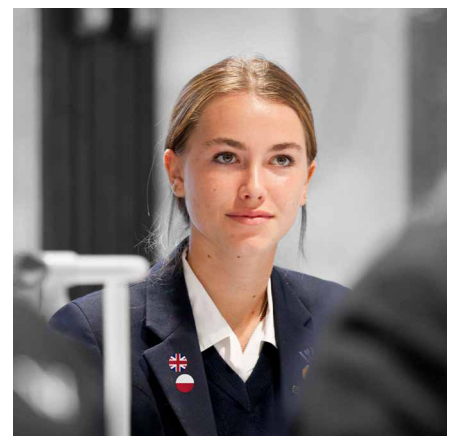
Woldingham is a happy and successful school where students become confident, compassionate and courageous young women.

Students are encouraged to nurture respect for self, each other and for the environment. The Woldingham community is strong, forward-thinking and kind. Students leave Woldingham with academic results that open doors, values to navigate successful careers and family life ahead, and friendships that last a lifetime.

Woldingham is a Catholic school, welcoming people of all faiths or none. Woldingham is part of the Sacred Heart Network, which has schools in more than 40 countries around the world.

Woldingham has a strong sense of community based on a set of shared principles which are:

- Faith and living responsibly in the world today.
- Social justice and an awareness which impels to action.
- Community and sharing friendships with those outside it.
- Scholarship and a deep respect for intellectual values.
- Personal responsibility and growth in an atmosphere of wide and appropriate freedom.





## ACADEMIC EXCELLENCE

Woldingham is committed to fulfilling the academic potential of every student. A selective school, Woldingham is proud to be in the top 1% of schools in the UK for 'value added education.' In 2022, 55% of A Level grades were A\*-A and 58% of GCSE grades were 9-8. In 2022, our EPQ students achieved 11A\*s, 11As and 7 Bs. Teaching and learning are centred around our unique WOLD model, which sets out our expectations of every lesson.

### **Willingness**

to work hard and make mistakes

### **Opportunities**

to maximise all learning

### **Learning**

is a life-long process

### **Determination**

to succeed

The school offers a broad curriculum with 28 A Level choices available in the Sixth Form. There is an excellent academic enrichment programme for all students, as well as a dedicated programme for academic scholars and intensive support for students applying to Oxbridge, medicine, dentistry and veterinary science.





### **PASTORAL CARE**

Pastoral care is at the heart of the school. At Woldingham every student is known and nurtured as an individual by both teaching and support staff. The school encourages – and expects – students and staff to be kind to each other. Woldingham's single-sex environment is supportive and stimulating. It enables students to be themselves and to grow into independent women who will make a positive contribution to the world. Relationships amongst the students and the staff are excellent. Tutors provide excellent academic and pastoral support and guidance for students, in close conjunction with Heads of Year, teaching and support staff.

### **THRIVE**

The school's THRIVE programme underpins everything at Woldingham. THRIVE promotes emotional wellbeing and enables every student to develop the growth mindset, resilience and self-worth to enjoy success as well as learn from setbacks.

woldinghamschool.co.uk

as well as learn from setbacks. It helps students face changes with flexibility, meet failure with resilience and manage their own busy lives calmly.

As part of the THRIVE programme, students develop study skills. Study skills are developed as girls move up through the school, with the strong foundations built in Years 7 and 8 carried on through to the Sixth Form.

THRIVE focuses on the importance of wellbeing. Students learn about handling social media, self-esteem and body image. They learn how to deal with pressure, responsibility and making the right choices. All skills needed to be successful at school and as an adult.

### **BOARDING**

Woldingham's boarding tradition remains strong with the school providing a flexible approach to boarding to meet the needs of families today. Around half of

current students board with options including full, weekly and flexi-boarding.

Boarders live in their own year group and are cared for by a dedicated Head of Year, housemistress and assistant housemistress.

Boarders in Years 7 and 8 live in Marden and Years 9 to 11 in Main House, with individual study bedrooms from Year 10 upwards. Students in the Sixth Form live in purpose-built modern accommodation, providing the perfect transition from school to university.

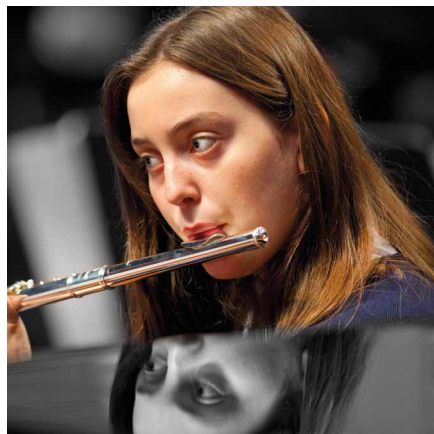
There is a busy range of evening and weekend activities with students in the older years provided with greater independence.

### **EXTRA-CURRICULAR**

Woldingham has a rich and varied extra-curricular programme with more than 80 clubs and activities to choose from. Students are encouraged to balance study with activity, and to be committed and proud of their wider abilities.

The House system fosters community across the school, with a busy programme of activities and competitions. Woldingham has four mixed-age Houses, each of which promotes a spirit of community among students of different ages and staff. Students belong to one of four Houses named after Patrons with a close association to the Society of the Sacred Heart. Houses organise a wide variety of activities including charity fund-raising events, inter-House competitions and, a highlight of the year, the House Festival in September. House assemblies are held fortnightly. Each House has its own Mass and feast where students and staff celebrate together and focus their fund-raising efforts.

Woldingham has an active outreach programme to give back to the community – both locally and more widely.



## SPORT

Sport is extremely important to life at Woldingham and plays a vital role in supporting physical and emotional health and wellbeing. Sport is about enjoyment, inclusion, team spirit, fitness, competition and performance. By the time our students leave, our aim is for them to have a lifelong commitment to sport and healthy living. We rightly celebrate the achievements of our athletes, some of whom represent their county and even country, and our school teams who do well in local and regional competitions.

Woldingham has excellent sports facilities including a sports centre with a large sports hall, two squash courts, fitness studio and a dance/gymnastics studio. We have extensive outdoor courts and pitches, an indoor tennis dome, an indoor swimming pool and an all-weather pitch.

In the autumn and spring terms, netball and hockey are our major sports. In the summer we play cricket, tennis and athletics. In addition, students compete in sports such as swimming and cross country. We place great value in being part of a team as well as excelling as an individual.

The school has a busy weekday and Saturday fixture list and participates in district and county tournaments. There are strongly contested House sport competitions throughout the year, culminating in our annual sports day. We also offer a fantastic range of sport trips within the UK and overseas.

## CREATIVE AND PERFORMING ARTS

Woldingham's Millennium Centre has some of the best facilities for music and drama performance of any school in the country. The 630-seater acoustically designed Dineen Auditorium includes an orchestra pit and fully computerised sound and lighting system. The Millennium Centre also has recital and rehearsal rooms, a studio theatre, wardrobe room, dressing rooms and fantastic foyer area.

Woldingham School has an outstanding reputation for drama. The industry standard facilities and specialist drama staff support students to create productions of the very highest standard. The school has high specification technical support with state-of-the-art sound and lighting run by a highly-qualified technical crew.

The Music Department is well resourced, dynamic and busy, providing many and varied opportunities for our musicians to perform. Standards and expectations are very high. In each term there is a large-scale concert and a number of informal and formal recitals. Our musicians perform in the numerous joint productions with the Drama Department and the choirs lead the singing at Westminster Cathedral for Masses and the school carol service.

Woldingham's art facilities are outstanding with purpose-built accommodation comprising two studios, a 3-D area equipped with a range of power tools and two kilns, a dark room and a textile room. Student artwork is displayed throughout the school.

## LOOKING FORWARD

As one of the top 100 independent schools in the country, we are not only ambitious for our students, we are ambitious for the school as a whole.

In July 2021 the school outlined far-reaching plans to further develop our wonderful 700-acre campus with an outdoor education and adventure centre, a new library and Sixth Form centre, a replacement swimming pool, a sports pavilion, and cookery school and vineyard.

Our fantastic Adventure and Outdoor Education Centre opened in spring 2022. In summer 2023, construction will start on a superb new Sixth Form Centre and Library, due to open in September 2024. The other projects will follow within the next few years.



# The role

Job title: Teacher of Classics  
Department: Classics  
Responsible to: Head of Classics

## ROLE AND PURPOSE

Classics at Woldingham is a thriving and increasingly popular subject area. The department instils a love of Classics in our students through high quality and vibrant teaching that fosters their intellectual curiosity and cultural engagement.

Latin is compulsory in Years 7 and 8, becoming an optional subject in Year 9. Latin is then offered as both an on-timetable and off-timetable option at GCSE (Eduqas). GCSE Classical Greek (OCR) is taught ab initio as an off-timetable subject, and both Latin and Classical Civilisation are taught at A Level (OCR). Results in the department are excellent and we regularly send students to top universities to read Classics or related subjects.

The department consists of the Head of Department and one full-time colleague, who both teach

from Year 7 to A Level. There is a culture of sharing resources and ideas, and the department has close connections with the Classical Association and Association for Latin Teaching. The department has use of two dedicated Classics classrooms, both with touchscreen interactive whiteboards, and a department office. Teachers have use of a personal Surface Pro device.

There is a rich co-curricular offering. The Junior Classics Club and the Senior Classics Society are led by students and explore a variety of topics covering mythology, history, and archaeology.

The department invites leading academics to give lectures and organises regular enrichment trips, including Fishbourne Roman Villa and a variety of Classics exhibitions, museums and plays in London.

The department also runs regular residential trips to classical sites overseas, such as Rome in 2023 and the Bay of Naples in 2024.

All members of the department are expected to prepare lessons, schemes of work and assessments, as well as contribute to the broader academic life of the school. They are also expected to tutor a form group and contribute to Woldingham's vibrant co-curricular programme.

Close to London, yet in an outstandingly beautiful rural setting, Woldingham is a happy and successful Catholic boarding and day school for girls aged 11 to 18. With a strong community and caring culture, we are building on a proud heritage that stretches back over 180 years. We're now driving an exciting future that's underpinned by fresh ideas, an innovative spirit and state-of-the-art facilities.





## **SPECIFIC RESPONSIBILITIES**

- To teach classes as allocated by the Head of Department.
- To plan and prepare schemes of work and lessons thoroughly, according to department and school policies.
- To prepare relevant classes for public examinations at GCSE and Advanced Level, according to the syllabuses specified by the Head of Department.
- To manage students' behaviour and promote a working atmosphere in lessons by following the department and school policy.
- To set, mark and assess work, record assessments and write reports according to department and school schedule and policies.
- To write and mark examination/test papers as directed and prepare mark schemes when necessary.
- To support the department's work by contributing to initiatives and taking on such administrative responsibilities which are reasonably allocated by the Head of Department.
- To contribute to the co-curricular programme.
- To undertake supervisory duties.
- To support the school's Catholic ethos.

## **THE PERSON**

### **OPERATIONAL EXCELLENCE**

#### **Essential**

- A well-qualified graduate with a degree in Classics, Latin or related subject.
- The ability to teach Latin and Classic Civilisation to A Level.
- Fluent and accurate written and spoken English.
- Good ICT skills.

### **PERSONAL BEHAVIOURS**

#### **Essential**

- An excellent communicator and someone whose passion for the subject inspires students.
- Excellent organisational skills.
- The ability to work as part of a team.

### **SAFEGUARDING AND**

#### **PASTORAL**

#### **Essential**

- Committed to safeguarding and promoting the welfare of children and young people.
- A satisfactory Enhanced Disclosure from the DBS.

### **OPERATIONAL EXCELLENCE**

#### **Desirable**

- The ability to teach Classical Greek up to GCSE.
- A qualified teacher.

### **ETHOS AND WHOLE SCHOOL VALUES**

#### **Essential**

- Someone who is willing to participate in the busy life of a boarding school.
- Someone willing to contribute to the enrichment provision offered by the department.
- Committed to operating as part of the School community.
- Committed to the Sacred Heart Values.
- Committed to Woldingham as a school with high academic standing providing a holistic education and outstanding pastoral care.





# How to apply

## **WOLDINGHAM SCHOOL IS RECRUITING A NEW TEACHER OF CLASSICS**

The closing date for applications is 9.00am on **Tuesday 21 February 2023**.

**Interviews will take place on Monday 27 February 2023.**

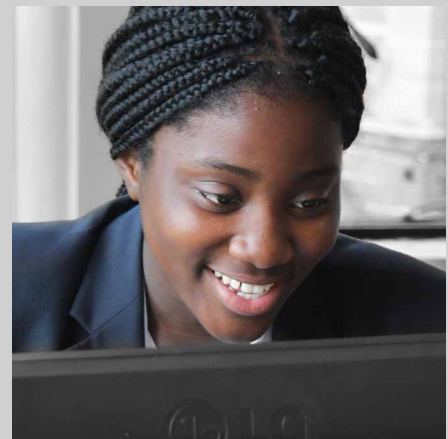
To apply please submit your completed application form to [hr@woldinghamschool.co.uk](mailto:hr@woldinghamschool.co.uk) with a supporting letter.

## **PROFESSIONAL DEVELOPMENT AND STAFF WELFARE**

Our professional team of staff is Woldingham's greatest asset, and we want to ensure that everyone is supported to work in an effective, enjoyable and fulfilling way. Staff Development is a high priority, with induction and mentoring programmes for Newly Qualified Teachers and new colleagues, plus an annual cycle of Personal Professional Development planning for all colleagues and a bespoke Leadership Programme in place.

Staff are welcome to use our range of outstanding facilities including the gym, squash and tennis courts and the swimming pool. Our Staffroom Committee organises regular social events, and a range of wellbeing initiatives support staff in their working life.

Woldingham School is committed to safeguarding and promoting the welfare of children, and applicants must be willing to undergo child protection screening appropriate to the post, including checks with past employers and the Disclosure and Barring Service.





Woldingham School, Marden Park, Woldingham, Surrey, CR3 7YA  
T: +44 (0)1883 654308 E: [hr@woldinghamschool.co.uk](mailto:hr@woldinghamschool.co.uk)  
[woldinghamschool.co.uk](http://woldinghamschool.co.uk)