

BRIEF FOR THE POSITION OF

# TEACHER OF PE (Head of Netball)

WOLDINGHAM SCHOOL



February 2023





# The school

Set in 700 acres of beautiful Surrey countryside, Woldingham is one of the UK's leading day and boarding schools for girls aged 11-18. Woldingham is an inspiring place for students to become confident, compassionate and courageous young women. It's where students learn to 'write your own story' through excellent teaching, boundless opportunities and first rate pastoral care.

As one of the UK's oldest girls' schools, Woldingham is proud to be a pioneer of women's education. Our single-sex environment is supportive and stimulating.

Students achieve outstanding GCSE and A Level results opening doors to exciting careers.

Woldingham is increasingly popular, with a record number of applicants for September 2023.

Students achieve outstanding GCSE and A Level results opening doors to exciting careers. Woldingham is in the top 10% of schools for added value.

Students leave Woldingham to take university places at prestigious institutions in the UK and overseas. Around 75% go to courses at Oxbridge or Russell Group universities. In the past five years we have had 26 Oxbridge offers. In recent years some of the most popular UK universities for students have included Bristol, Durham, Edinburgh, Exeter, Manchester and

UCL. Woldingham students have also taken up places at a range of universities overseas including Princeton, NYU and Cornell in the USA.

Academic excellence in all subject areas goes hand in hand with learning beyond the classroom. Our exceptional extra-curricular programme of sport, clubs, performing arts and outreach into our local community enables students to develop a wonderful range of skills, expertise and interests, alongside high-level academic achievement.

Around 50% of students board – full, weekly or flexi. Around 40% of our students live locally, 35% come from London and 25% from overseas. Our global community is very important. More than 40 nationalities make up the Woldingham staff and student community.

Woldingham is increasingly popular, with a record number of applicants for September 2023.



The Board of Governors agreed a new strategic development plan for 2019-2024, with a refreshed vision and mission underpinned by the school's Sacred Heart values of faith, community, intellectual values, social awareness and personal growth. The plan has been extremely well received and the school has made a positive start to achieve the ambitious vision.







## HISTORY

Founded by Saint Madeleine Sophie Barat in 1842, Woldingham is one of the oldest girls' schools in the UK. Initially based in Acton, the school later moved to Roehampton and in 1946 moved to our current home at Marden Park. Initially a full boarding school, Woldingham now has a well-balanced mix of boarders and day students.

As the first Sacred Heart school in England, Woldingham was initially called the Convent of the Sacred Heart. It became Woldingham School in 1985 when it moved to lay leadership.

Woldingham celebrates our 180th anniversary in the 2022-23 school year.

## ETHOS

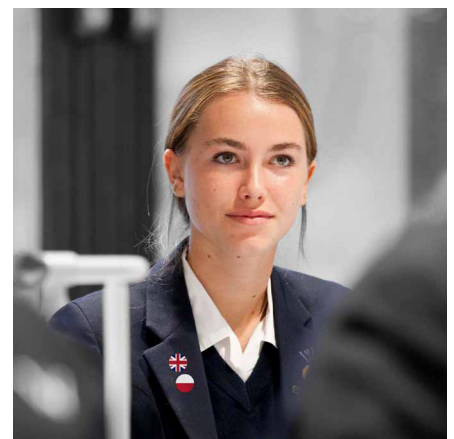
Woldingham is a happy and successful school where students become confident, compassionate and courageous young women.

Students are encouraged to nurture respect for self, each other and for the environment. The Woldingham community is strong, forward-thinking and kind. Students leave Woldingham with academic results that open doors, values to navigate successful careers and family life ahead, and friendships that last a lifetime.

Woldingham is a Catholic school, welcoming people of all faiths or none. Woldingham is part of the Sacred Heart Network, which has schools in more than 40 countries around the world.

Woldingham has a strong sense of community based on a set of shared principles which are:

- Faith and living responsibly in the world today.
- Social justice and an awareness which impels to action.
- Community and sharing friendships with those outside it.
- Scholarship and a deep respect for intellectual values.
- Personal responsibility and growth in an atmosphere of wide and appropriate freedom.





## ACADEMIC EXCELLENCE

Woldingham is committed to fulfilling the academic potential of every student. A selective school, Woldingham is proud to be in the top 10% of schools in the UK for 'value added education.' In 2022, 55% of A Level grades were A\*-A and 58% of GCSE grades were 9-8. In 2022, our EPQ students achieved 11A\*s, 11As and 7 Bs. Teaching and learning are centred around our unique WOLD model, which sets out our expectations of every lesson.

### **Willingness**

to work hard and make mistakes

### **Opportunities**

to maximise all learning

### **Learning**

is a life-long process

### **Determination**

to succeed

The school offers a broad curriculum with 28 A Level choices available in the Sixth Form. There is an excellent academic enrichment programme for all students, as well as a dedicated programme for academic scholars and intensive support for students applying to Oxbridge, medicine, dentistry and veterinary science.







### **PASTORAL CARE**

Pastoral care is at the heart of the school. At Woldingham every student is known and nurtured as an individual by both teaching and support staff. The school encourages – and expects – students and staff to be kind to each other. Woldingham's single-sex environment is supportive and stimulating. It enables students to be themselves and to grow into independent women who will make a positive contribution to the world. Relationships amongst the students and the staff are excellent. Tutors provide excellent academic and pastoral support and guidance for students, in close conjunction with Heads of Year, teaching and support staff.

### **THRIVE**

The school's THRIVE programme underpins everything at Woldingham. THRIVE promotes emotional wellbeing and enables every student to develop the growth mindset, resilience and self-worth to enjoy success as well as learn from setbacks.

woldinghamschool.co.uk

as well as learn from setbacks. It helps students face changes with flexibility, meet failure with resilience and manage their own busy lives calmly.

As part of the THRIVE programme, students develop study skills. Study skills are developed as girls move up through the school, with the strong foundations built in Years 7 and 8 carried on through to the Sixth Form.

THRIVE focuses on the importance of wellbeing. Students learn about handling social media, self-esteem and body image. They learn how to deal with pressure, responsibility and making the right choices. All skills needed to be successful at school and as an adult.

### **BOARDING**

Woldingham's boarding tradition remains strong with the school providing a flexible approach to boarding to meet the needs of families today. Around half of

current students board with options including full, weekly and flexi-boarding.

Boarders live in their own year group and are cared for by a dedicated Head of Year, housemistress and assistant housemistress.

Boarders in Years 7 and 8 live in Marden and Years 9 to 11 in Main House, with individual study bedrooms from Year 10 upwards. Students in the Sixth Form live in purpose-built modern accommodation, providing the perfect transition from school to university.

There is a busy range of evening and weekend activities with students in the older years provided with greater independence.

### **EXTRA-CURRICULAR**

Woldingham has a rich and varied extra-curricular programme with more than 80 clubs and activities to choose from. Students are encouraged to balance study with activity, and to be committed and proud of their wider abilities.

The House system fosters community across the school, with a busy programme of activities and competitions. Woldingham has four mixed-age Houses, each of which promotes a spirit of community among students of different ages and staff. Students belong to one of four Houses named after Patrons with a close association to the Society of the Sacred Heart. Houses organise a wide variety of activities including charity fund-raising events, inter-House competitions and, a highlight of the year, the House Festival in September. House assemblies are held fortnightly. Each House has its own Mass and feast where students and staff celebrate together and focus their fund-raising efforts.

Woldingham has an active outreach programme to give back to the community – both locally and more widely.



## SPORT

Sport is extremely important to life at Woldingham and plays a vital role in supporting physical and emotional health and wellbeing. Sport is about enjoyment, inclusion, team spirit, fitness, competition and performance. By the time our students leave, our aim is for them to have a lifelong commitment to sport and healthy living. We rightly celebrate the achievements of our athletes, some of whom represent their county and even country, and our school teams who do well in local and regional competitions.

Woldingham has excellent sports facilities including a sports centre with a large sports hall, two squash courts, fitness studio and a dance/gymnastics studio. We have extensive outdoor courts and pitches, an indoor tennis dome, an indoor swimming pool and an all-weather pitch.

In the autumn and spring terms, netball and hockey are our major sports. In the summer we play cricket, tennis and athletics. In addition, students compete in sports such as swimming and cross country. We place great value in being part of a team as well as excelling as an individual.

The school has a busy weekday and Saturday fixture list and participates in district and county tournaments. There are strongly contested House sport competitions throughout the year, culminating in our annual sports day. We also offer a fantastic range of sport trips within the UK and overseas.

## CREATIVE AND PERFORMING ARTS

Woldingham's Millennium Centre has some of the best facilities for music and drama performance of any school in the country. The 630-seater acoustically designed Dineen Auditorium includes an orchestra pit and fully computerised sound and lighting system. The Millennium Centre also has recital and rehearsal rooms, a studio theatre, wardrobe room, dressing rooms and fantastic foyer area.

Woldingham School has an outstanding reputation for drama. The industry standard facilities and specialist drama staff support students to create productions of the very highest standard. The school has high specification technical support with state-of-the-art sound and lighting run by a highly-qualified technical crew.

The Music Department is well resourced, dynamic and busy, providing many and varied opportunities for our musicians to perform. Standards and expectations are very high. In each term there is a large-scale concert and a number of informal and formal recitals. Our musicians perform in the numerous joint productions with the Drama Department and the choirs lead the singing at Westminster Cathedral for Masses and the school carol service.

Woldingham's art facilities are outstanding with purpose-built accommodation comprising two studios, a 3-D area equipped with a range of power tools and two kilns, a dark room and a textile room. Student artwork is displayed throughout the school.

## LOOKING FORWARD

As one of the top 100 independent schools in the country, we are not only ambitious for our students, we are ambitious for the school as a whole.

In July 2021 the school outlined far-reaching plans to further develop our wonderful 700-acre campus with an outdoor education and adventure centre, a new library and Sixth Form centre, a replacement swimming pool, a sports pavilion, and cookery school and vineyard.

Our fantastic Adventure and Outdoor Education Centre opened in spring 2022. In summer 2023, construction will start on a superb new Sixth Form Centre and Library, due to open in September 2024. The other projects will follow within the next few years.



# The role

Job title: Teacher of PE (Head of Netball)  
Department: PE  
Responsible to: Director of Sport

## ROLE AND PURPOSE

We are seeking a dynamic teacher of Physical Education with a specialism in netball to join this excellent department. The successful candidate will have a strong coaching background in netball and communicate an enthusiasm for PE. She/he will also need to teach across a range of sports at a more recreational level.

The successful candidate will lead and develop the netball programme throughout the school.

## SPECIFIC RESPONSIBILITIES

- To teach classes as allocated by the Director of Sport.
- To plan and prepare schemes of work and lessons thoroughly, according to department and school policies.
- To manage pupils' behaviour and promote a working atmosphere in lessons by following department and school policy.
- To undertake the responsibilities of a form tutor, promoting the academic and personal development of the tutees in your care.
- To contribute to the co - curricular programme.
- To undertake supervisory duties.
- To co-ordinate a full and varied netball fixture programme, which includes competitive opportunities for all age groups and organising entry into National and County Netball Tournaments.
- To lead and organise the weekly fixtures and training days including communication of logistics and staffing, catering and transport.
- To establish a Netball Development Programme.
- To develop a sustainable Outreach Programme for Netball.
- To manage the netball staff and external coaches, ensuring the effective communication of training and fixture information to pupils and the school community.
- To manage relationships with external clubs and sponsors.
- To contribute to the GCSE PE programme on either theory or practical components as required by the Director of Sport.
- To communicate with pupils, staff and parents with regards to Netball related queries and the weekly publication of results including contributions to the school website and other social media feeds.
- To support the department's work by contributing to initiatives and taking on such administrative responsibilities which are reasonably allocated by the Director of Sport.
- To be available for Sports Tours scheduled throughout the year, taking a lead on the organisation of at least one tour per academic year.
- To manage the netball budget, undertake regular equipment audits and ensure all equipment is safe and fit for purpose.







## PERSON SPECIFICATION

### OPERATIONAL EXCELLENCE Essential

- A well-qualified Teacher of PE
- A well-qualified netball coach
- Strong coaching/playing background in netball
- Fluent and accurate written and spoken English
- Excellent ICT skills
- Ability to confidently umpire netball fixtures at all levels.

### OPERATIONAL EXCELLENCE Desirable

- Ability to offer A Level teaching
- Ability to offer GCSE teaching
- Ability to offer Sports Leaders Level 3 teaching

### PERSONAL BEHAVIOURS Essential

- An excellent communicator who is able to inspire an interest in the subject.
- Excellent organisational skills.
- The ability to work as part of a busy team.
- High standards and able to bring out the best in pupils.
- Positive and proactive; able to solve problems.

### ETHOS AND WHOLE SCHOOL VALUES Essential

- Committed to operating as part of the School community.
- Committed to the Sacred Heart Values.
- Committed to Woldingham as a school with high academic standing providing a holistic education and outstanding pastoral care.

### SAFEGUARDING AND PASTORAL Essential

- Committed to safeguarding and promoting the welfare of children and young people.
- A satisfactory Enhanced Disclosure from the DBS.







# How to apply

## **WOLDINGHAM SCHOOL IS RECRUITING A NEW TEACHER OF PE (Head of Netball)**

The closing date for applications is 9.00am on **Wednesday 01 March 2023**.

**Interviews will take place on Wednesday 08 March 2023.**

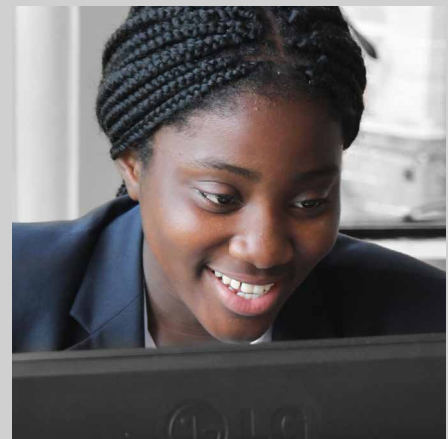
To apply please submit your completed application form to [hr@woldinghamschool.co.uk](mailto:hr@woldinghamschool.co.uk) with a supporting letter.

## **PROFESSIONAL DEVELOPMENT AND STAFF WELFARE**

Our professional team of staff is Woldingham's greatest asset, and we want to ensure that everyone is supported to work in an effective, enjoyable and fulfilling way. Staff Development is a high priority, with induction and mentoring programmes for Newly Qualified Teachers and new colleagues, plus an annual cycle of Personal Professional Development planning for all colleagues and a bespoke Leadership Programme in place.

Staff are welcome to use our range of outstanding facilities including the gym, squash and tennis courts and the swimming pool. Our Staffroom Committee organises regular social events, and a range of wellbeing initiatives support staff in their working life.

Woldingham School is committed to safeguarding and promoting the welfare of children, and applicants must be willing to undergo child protection screening appropriate to the post, including checks with past employers and the Disclosure and Barring Service.





Woldingham School, Marden Park, Woldingham, Surrey, CR3 7YA  
T: +44 (0)1883 654308 E: [hr@woldinghamschool.co.uk](mailto:hr@woldinghamschool.co.uk)  
[woldinghamschool.co.uk](http://woldinghamschool.co.uk)